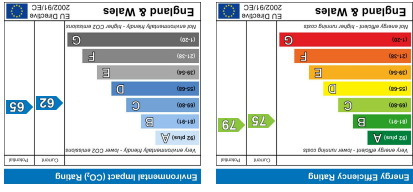
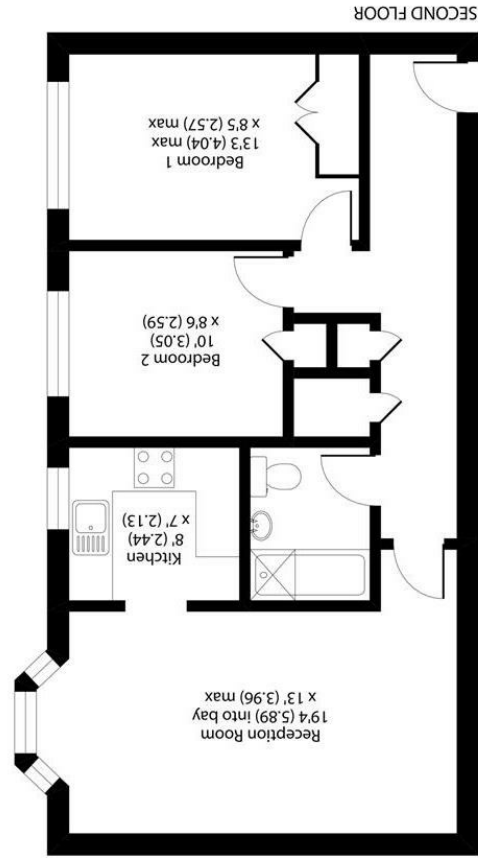


**Important Information**  
 All appliances listed in these details are only 'as seen' and have not been tested by Gibson Lane, nor have we sought certification of warranty or service, unless otherwise stated. Measurements, areas and distances are approximate. Floor plans and photographs are for guidance purposes only and must not be relied upon for any purpose. These details are offered on the understanding that all negotiations are made through this company. Neither these particulars, nor verbal representations, form part of any offer or contract, and their accuracy cannot be guaranteed.



Floor plan produced in accordance with RICS Property Measurement Standards (IPMS2 Residential) © RICS 2020.  
 RICS Property Measurement Certified  
 RICS Registered  
 Produced for Gibson Lane, REF: 647352



Approximate Area = 642 sq ft / 59.6 sq m  
 For identification only - Not to scale

34 Richmond Road  
 Kingston upon Thames  
 Surrey  
 KT2 5ED  
 www.gibsonlane.co.uk  
 Tel: 020 8546 5444



**22 Sigrist Square**  
 Kingston Upon Thames KT2 6JT



## Sigrist Square

Kingston Upon Thames KT2 6JT

Asking Price £400,000

A stunning two bedroom apartment located in a gated development close to both Kingston town centre and excellent transport links.

### Description

A beautifully presented two bedroom apartment located in a gated development close to both Kingston town centre and excellent transport links. The flat has been tastefully designed and renovated throughout and offers a stunning open layout with fully fitted kitchen, light and bright reception / dining area, two spacious double bedrooms and a modern bathroom. Furthermore, the property has huge storage space in the loft, includes an allocated parking space, a share of the freehold and delightful communal gardens.

### Situation

Sigrist Square is conveniently positioned for Kingston station giving direct access into Waterloo and the A3 which serves both London & the M25. Kingston town centre with its array of shops, restaurants and bars is a short distance away. Richmond Park and the River Thames are also within easy reach. The standard of schooling in the immediate area is excellent within both the private and state sectors.

**Tenure:** Leasehold - Share of Freehold  
**Local Authority:** Kingston Upon Thames

